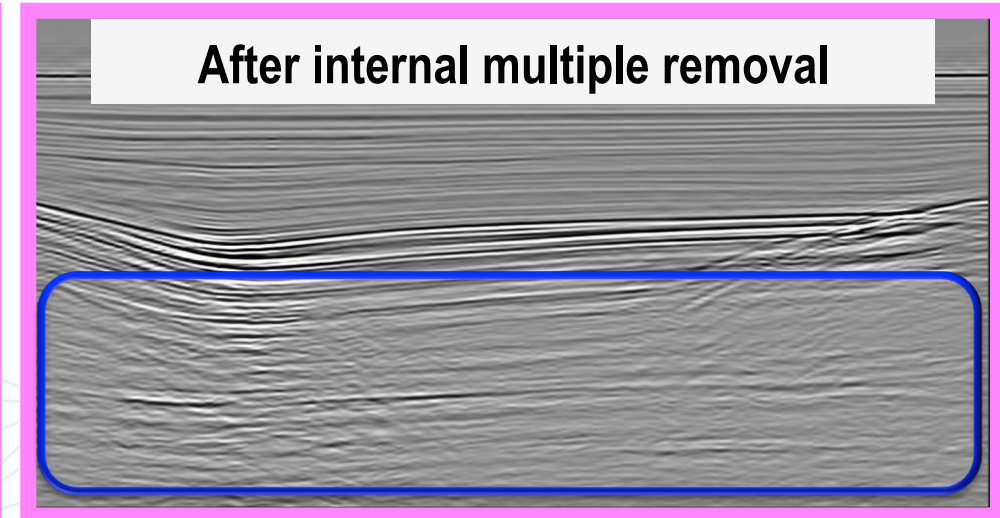
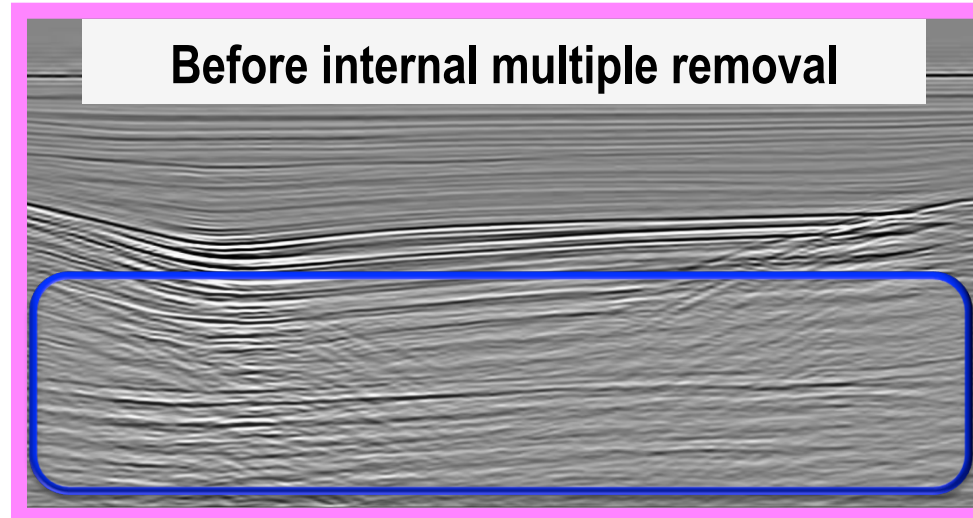
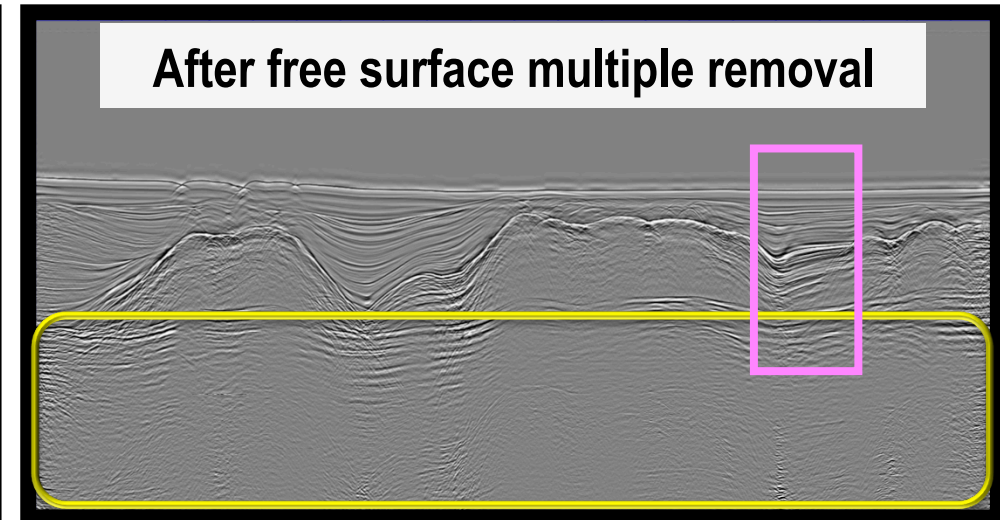
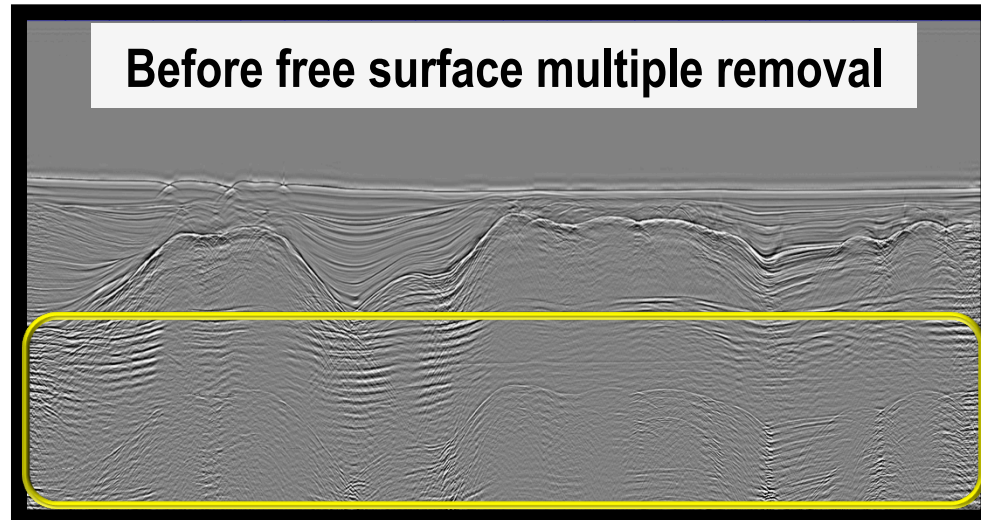


# Subsalt inverse scattering series multiple removal: offshore Brazil

- ✓ A. Ferreira (2011) applies the ISS method to remove free surface multiples and internal multiples
- ✓ Conclusion: “No other tested method was able to attenuate the sequence of internal multiples below the salt layers.”



\* Note: The same color boxes correspond to the same area